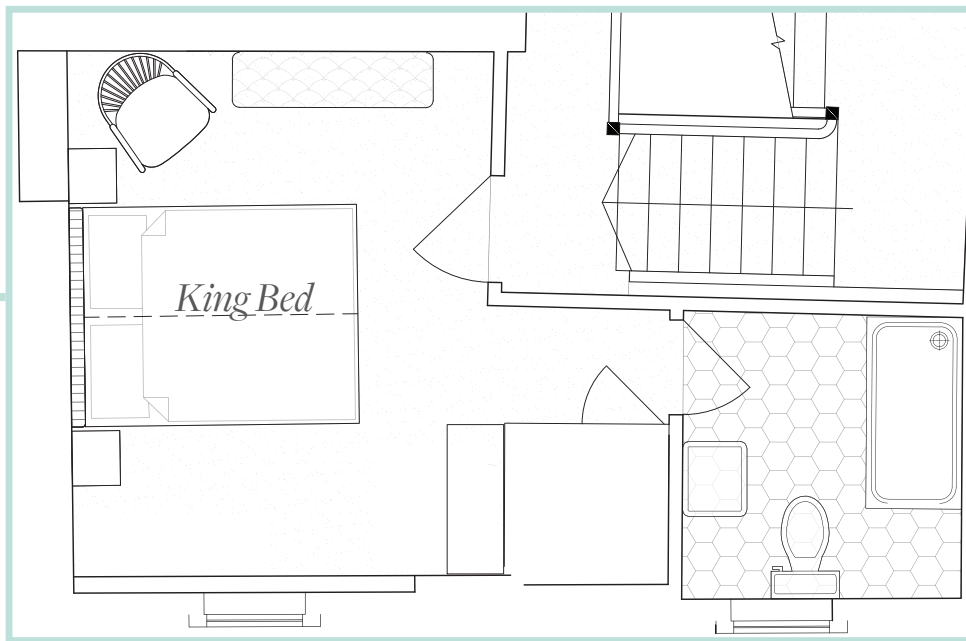


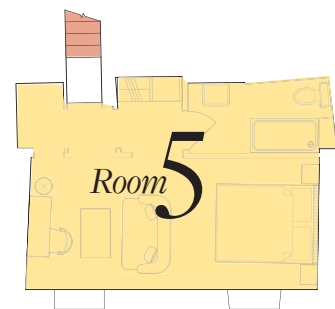
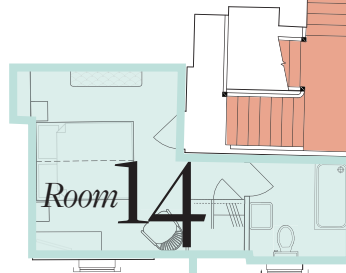
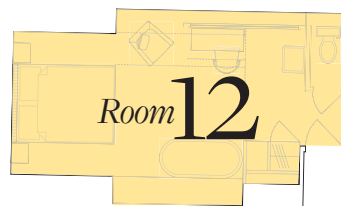
# Room 14

## Cosy House Room

Room 14 is located on the second floor and accessed via its own private staircase. Its slightly wonky floor, slanted ceiling and original beams exude unmistakable Cotswolds character, while its view across The Square makes it a great spot for watching the world go by.



Back of building



Front of building

### Second Floor

- Amazing Great Rooms
- Cosy Great Rooms
- Garden Rooms
- House Rooms
- Cosy House Rooms
- Family Rooms
- Stairs