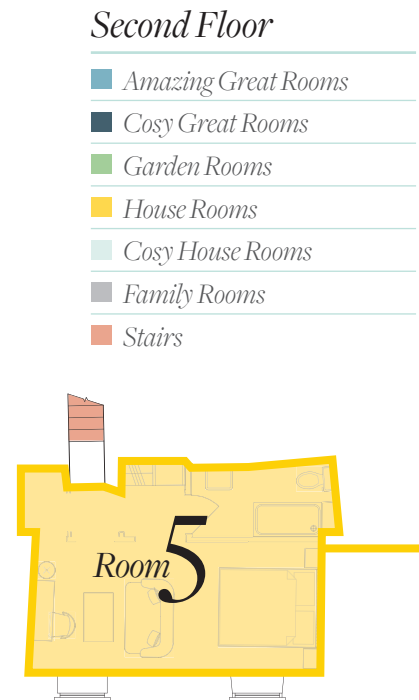
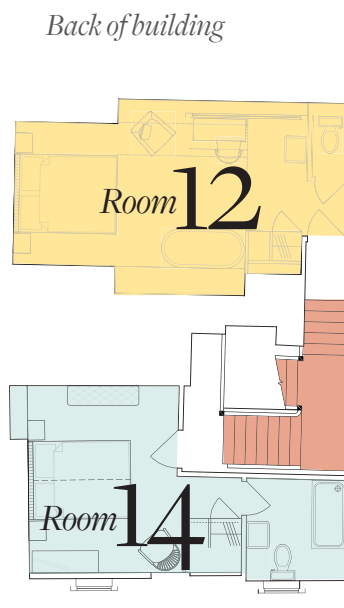
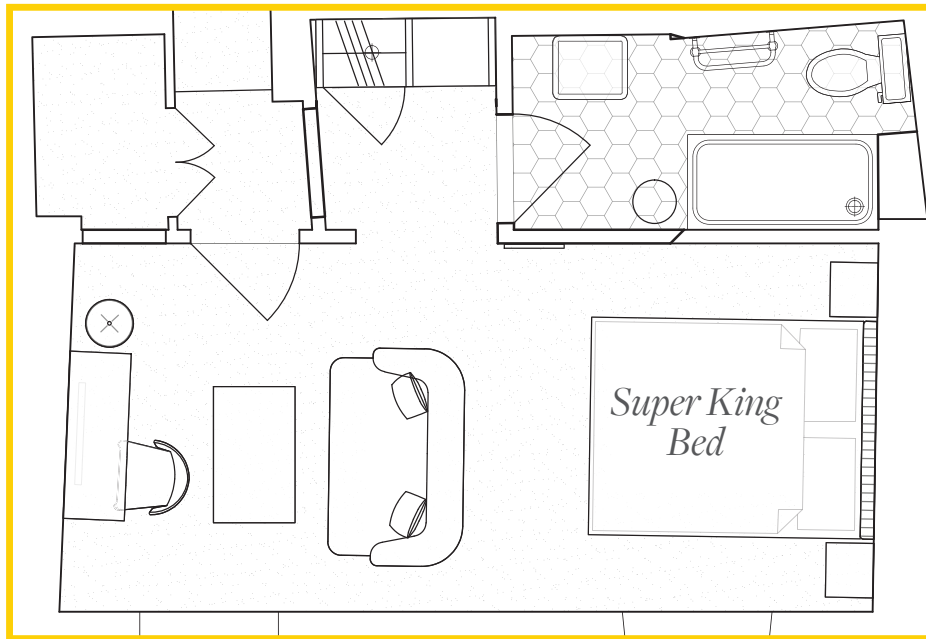


Room 5

House Room

This second-floor room is accessed via its own private and slightly wonky staircase – one of the quirkiest original features of the building! A low-beamed entrance leads through to a spacious room with a great view across Stow's famous square.



Second Floor

- Amazing Great Rooms
- Cosy Great Rooms
- Garden Rooms
- House Rooms
- Cosy House Rooms
- Family Rooms
- Stairs

Back of building

Front of building